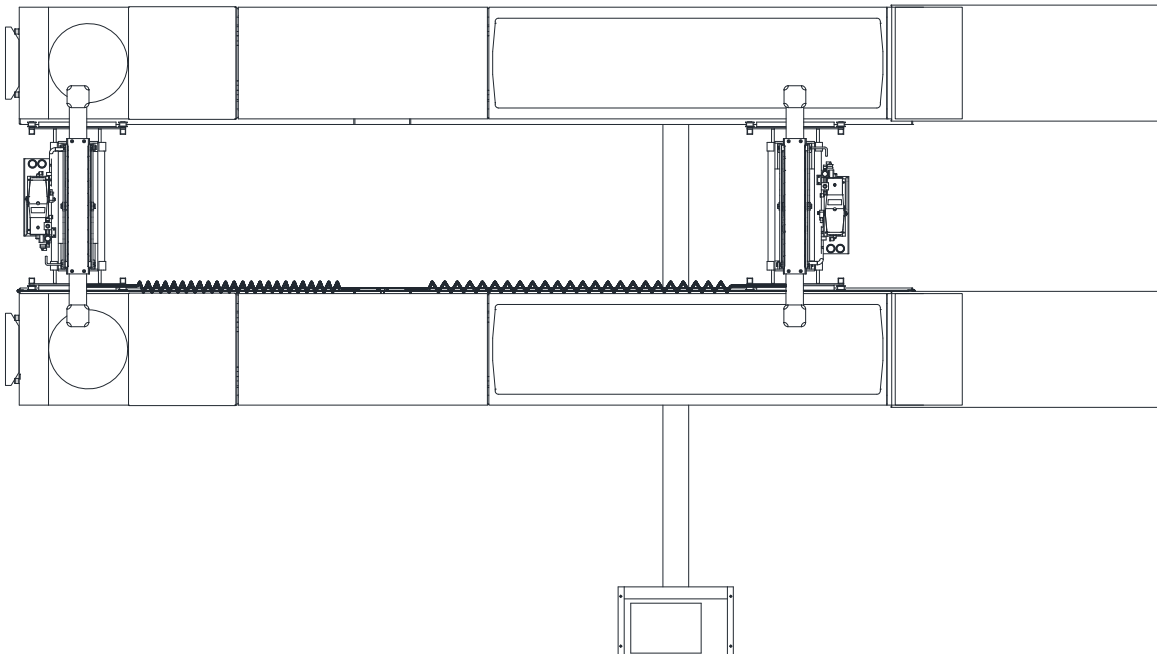


CL Challenger Lifts

INSTALLATION & OPERATION MANUAL SUPPLEMENT AIR LINE ACCESSORY KIT (40230-SX)

FOR USE WITH MODELS SX14 & SX14R SCISSOR LIFT AND RJ7X ROLLING JACKS



2311 SOUTH PARK RD LOUISVILLE, KENTUCKY 40219

EMAIL: SALES@CHALLENGERLIFTS.COM WEB SITE: WWW.CHALLENGERLIFTS.COM

OFFICE 800-648-5438 / 502-625-0700 FAX 502-587-1933

**IMPORTANT: READ THIS MANUAL COMPLETELY BEFORE
INSTALLING or OPERATING LIFT**

**Read entire manual before assembling, installing, operating, or servicing
this equipment. Proper maintenance and inspection is necessary for safe
operation. DO NOT operate a damaged lift.**

RUNWAY TEE FITTING

1. Turn OFF air supply to the control console of the lift.
2. A T-fitting is pre-installed on the inner wall of the driver side runway to supply air to the rolling jacks.

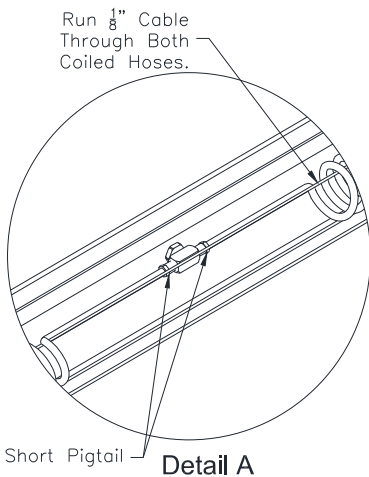
COILED HOSE INSTALLATION

1. Attach the coiled hose to the Tee in the runway and to the jacks.
 - a. Connect the short pigtail end to the Tee as shown in the **Detail A**.



Figure 1 – Coiled Air Hose

- b. Run $\text{Ø}1/8"$ steel cable through the coiled hoses as shown below.



- c. Mount cable to tabs at the ends of the jack rail, attaching with $1/4"$ washer & lock nut as shown below.

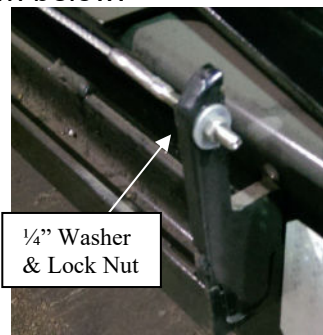


Figure 2 – Cable Mounting

2. Use line clamp and provide provided hardware to secure the coiled hose to the jack as shown in **Detail B**.

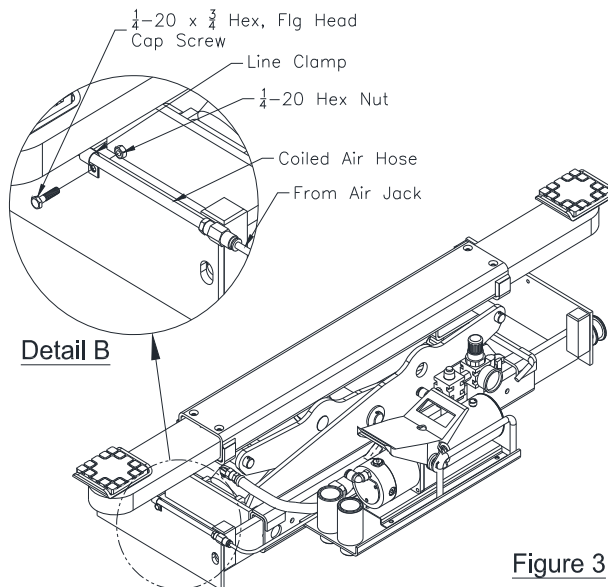


Figure 3

COILED HOSE TO JACK CONNECTION

1. When coiled hoses are attached to the jacks with the clamps provided, cut the provided $1/4"$ OD plastic tubing into lengths shown in **Figure 4** and attach fittings by pushing onto end of tubing.
2. Rout hose with connections as shown in **Figure 5**. Note: different routing for Front or Rear jack location.

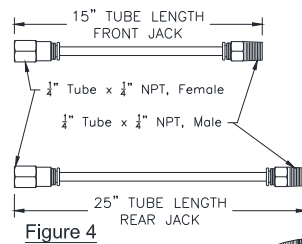


Figure 4

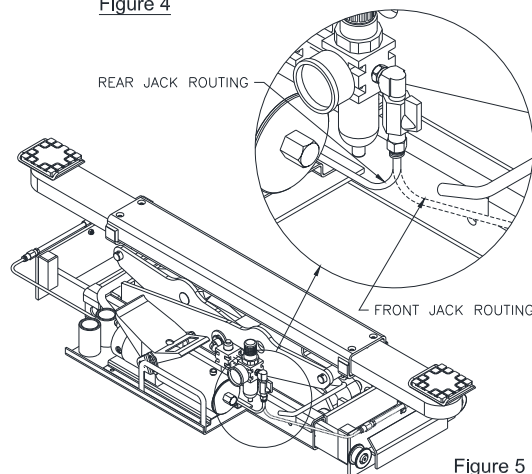
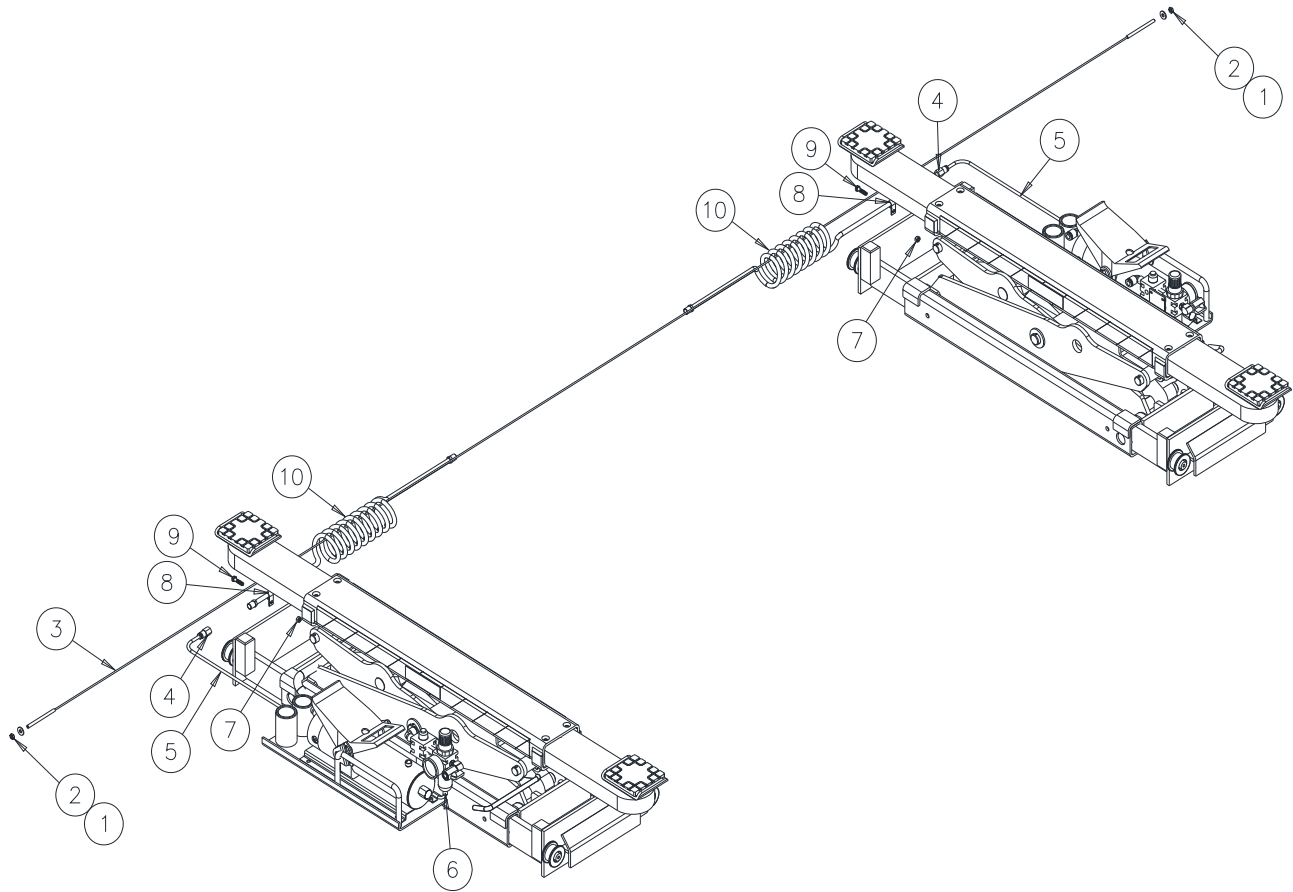


Figure 5

Air Line Accessory Kit Installation & Operation Supplement



ITEM #	PART #	QTY/LIFT	DESCRIPTION
1	36059	2	1/4"-20 ESNA LOCK NUT
2	31115	2	1/4" FLAT WASHER
3	40238	1	1/8" DIA. x 206 1/2" LG CABLE
4	40240	2	1/4" TUBE x 1/4" NPT, FEMALE CONNECTOR
5	24102	1	1/4" AIR LINE x 4' LG, PLASTIC TUBING
6	16164	2	1/4" TUBE x 1/4" NPT, MALE CONNECTOR
7	40085	2	1/4"-20 HEX NUT
8	31025	2	LINE CLAMP
9	A2125	2	1/4"-20 x 3/4" HEX FLANGE NUT
10	40239	2	1/4" NPT x 15ft, COILED AIR HOSE