

Air Line Accessory Kit
Installation & Operation Supplement



**INSTALLATION & OPERATION MANUAL
SUPPLEMENT**

MODEL 44018
AIR ACCESSORY KIT (44AK18)

2311 SOUTH PARK RD LOUISVILLE, KENTUCKY 40219
EMAIL: SALES@CHALLENGERLIFTS.COM WEB SITE: WWW.CHALLENGERLIFTS.COM
OFFICE 800-648-5438 / 502-625-0700 FAX 502-587-1933

IMPORTANT: READ THIS MANUAL COMPLETELY BEFORE INSTALLING OR OPERATING
LIFT

Read entire manual before assembling, installing, operating, or servicing this equipment. Proper maintenance and inspection is necessary for safe operation. DO NOT operate a damaged lift.

Air Line Accessory Kit
Installation & Operation Supplement

LAYOUT VIEW

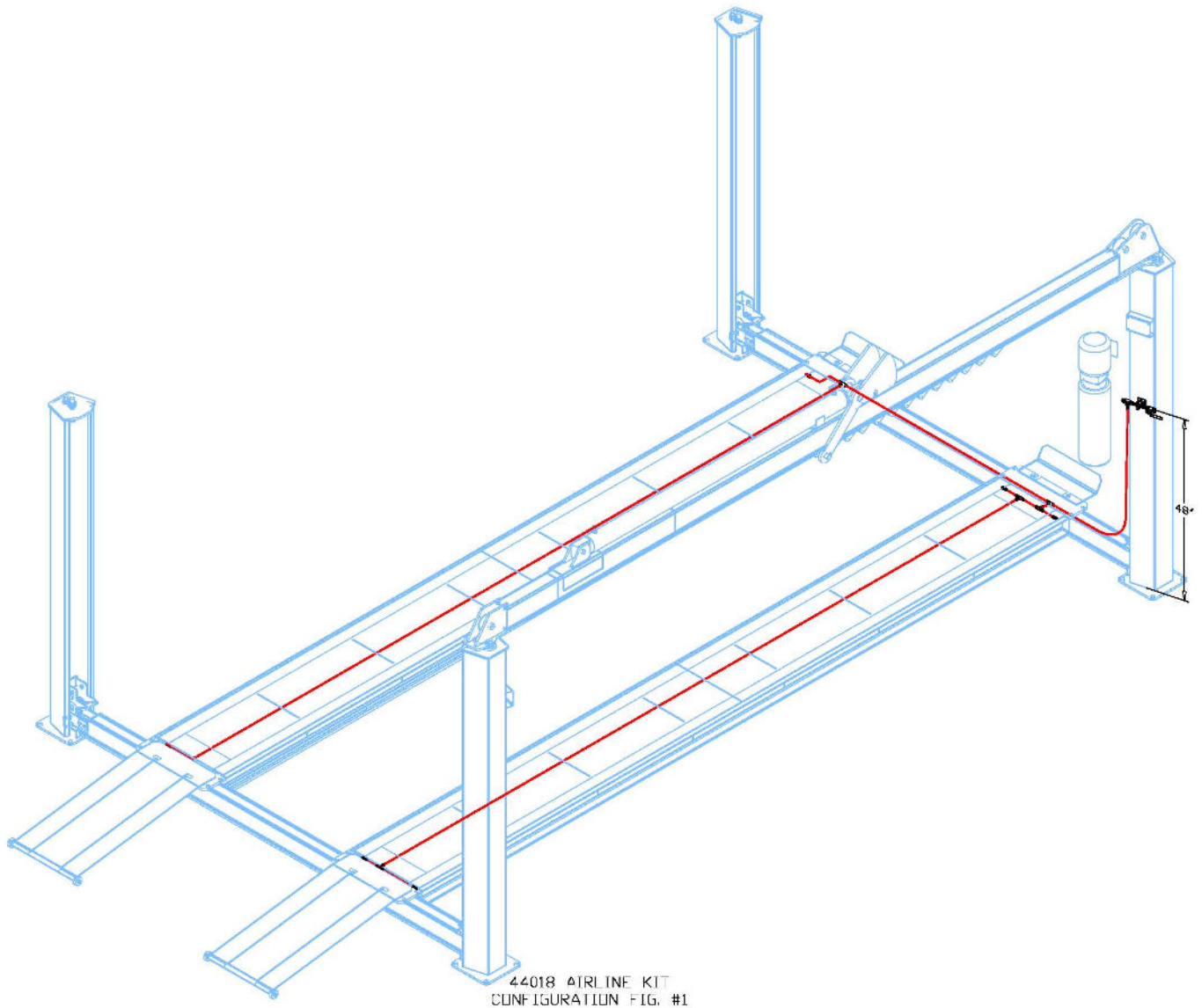


Figure 1

INSTALLATION:

1. Using the pneumatic bracket as a template, drill two Ø3/8" holes centered on the power unit column 48" from the top of the base plate as shown in **Fig 1**.
Note: Remove the steel shavings created by drilling the holes before operating the lift.
2. Attach the pneumatic bracket to the column using the provided 5/16-18 hardware. **NOTE:** The head of the bolt should be on the inside of the column, **Fig 2**.

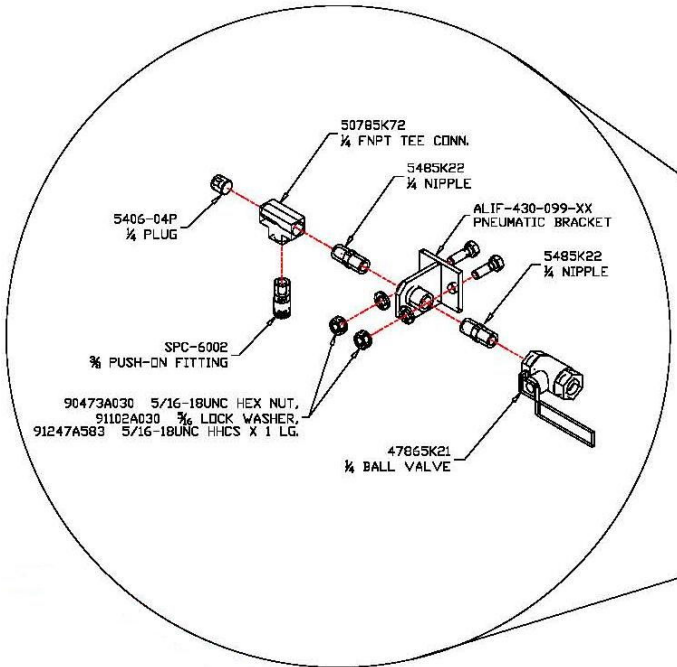


Figure 2

3. Assemble the two 1/4 NPT nipples to the pneumatic bracket as shown in **Fig 2**.
4. Install the 1/4 NPT ball valve on the right side of the bracket assembly.
5. Assemble the 1/4 NPT female tee, 3/8" tube, and 1/4 NPT plug on the left side, **Fig 2**.

TUBE ROUTING:

6. Route the 3/8" tube from the push lock fitting on the pneumatic bracket assembly on the power unit column to the angle or tube welded to the front crossbeam **Fig 3**.
7. Inside the front passenger side runway install (3) tees and (2) 3/8" tube x 1/4 NPT push lock fittings to the 1/4 NPT couplings welded to the runway, shown in **Fig 3**.

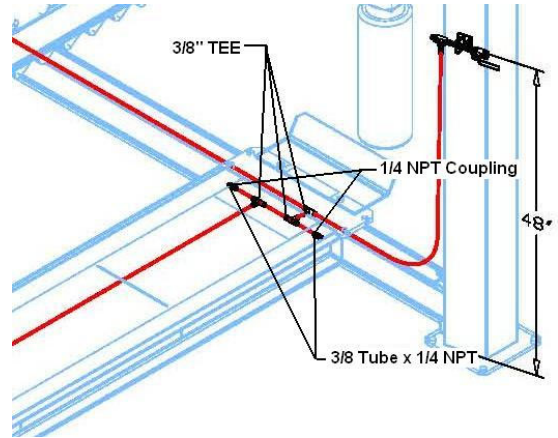


Figure 3

8. Continue to route the 3/8 tube down to the rear of the passenger side runway, install (1) 3/8 tee with (2) 3/8 tube x 1/4 NPT push fittings, **Fig 4**. Connect the 3/8 tube x 1/4 NPT push fittings to the 1/4 NPT couplings.

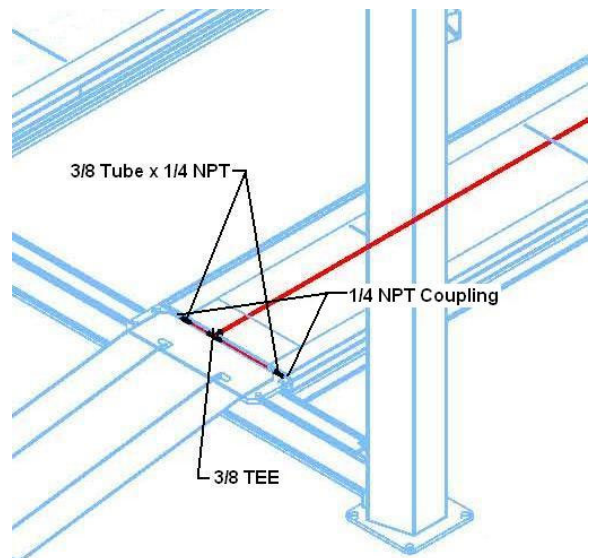


Figure 4

Air Line Accessory Kit
Installation & Operation Supplement

9. Route the 3/8 tube from the tee from the front crossbeam, passenger side to the tee in the front drivers side runway, **Fig 5**. Connect the 3/8 tube x 1/4 NPT fitting to the 1/4 NPT coupling welded in the runway.

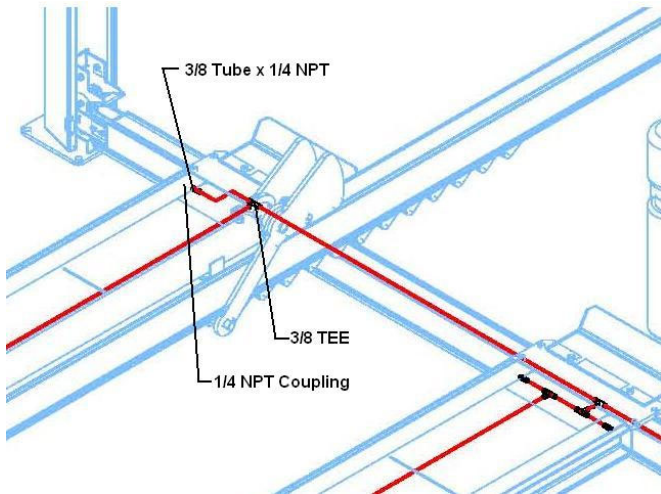


Figure 5

10. Finally, route the 3/8 tube to the rear 1/4 NPT coupling using the 3/8 tube x 1/4 NPT fitting provided, **Fig 6**.

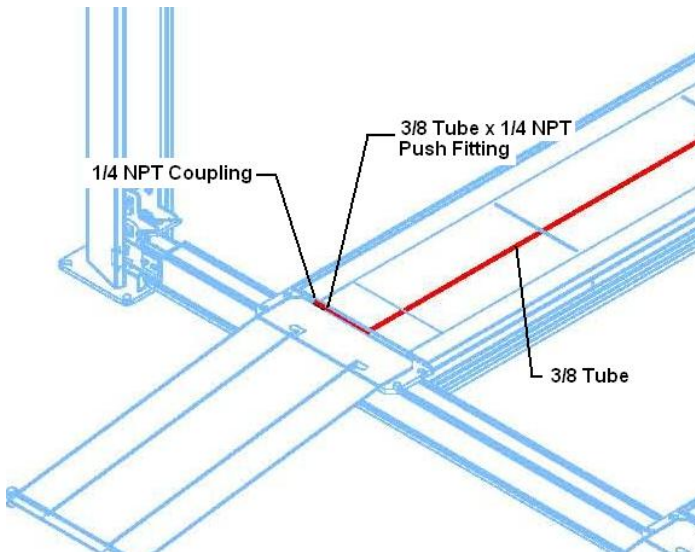


Figure 6

CABLE INSTALLATION:

11. On the runway with air supply on the inner side, place Cable Bracket on underside of runway 3" from edge as shown in Fig 7. Drill 3/8" hole thru I-Beam and secure bracket in place using 5/16"-18 x 1" Lg. hex bolt, hex nut, and

lock washer. Repeat for other end of runway.

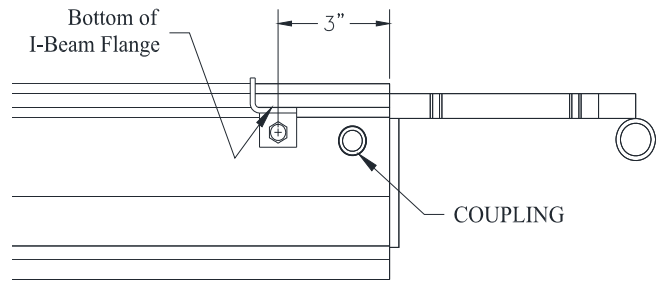


Figure 7

12. Attach threaded end of cable to Cable Bracket as shown in **Fig 8**.

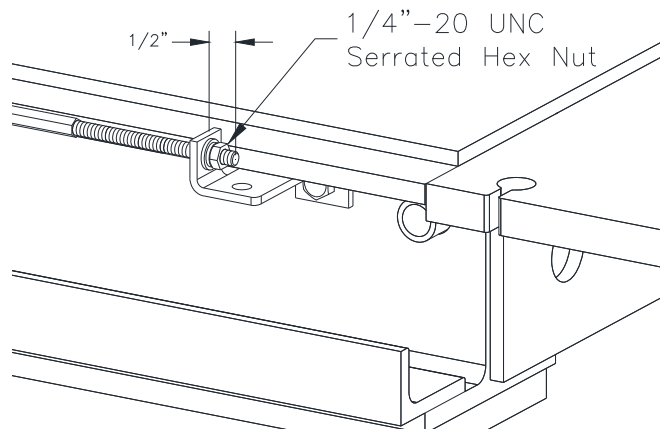


Figure 8

13. Route cable thru both spiral flex air lines. On opposite end of runway, route cable thru hole in Cable Bracket and attach Cable Clamp as shown in **Fig 9**.

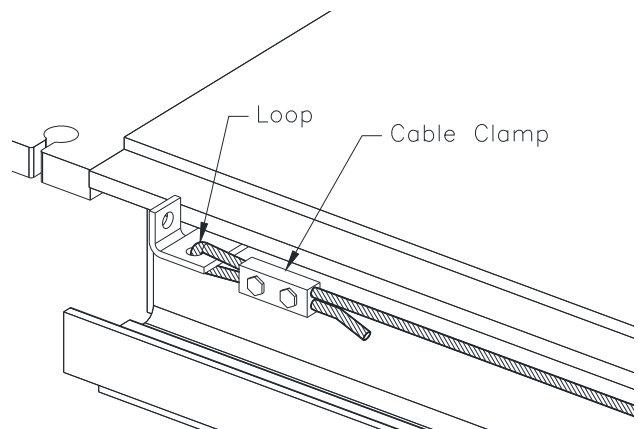


Figure 9

AIR LINE ASSEMBLIES:

14. Cut (2) lengths of 3/8" tubing and attach fittings to ends as shown in **Fig 10**.

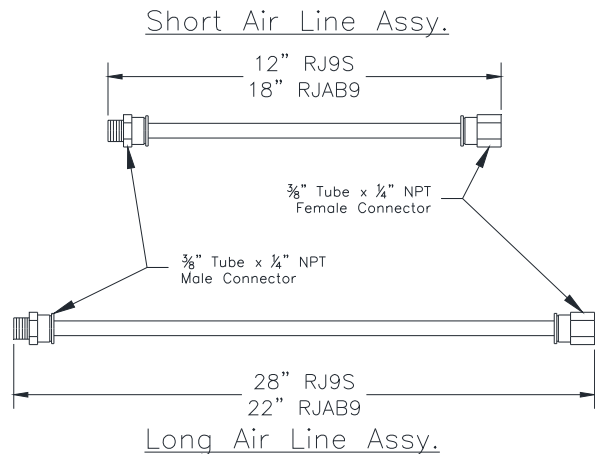


Figure 10

RJ9S AIR LINE ROUTING:

15. Attach Short Air Line Assembly to spiral flex air line closest to the Jack air connection point. Connect male end to fitting on Jack as shown in **Fig 11**.

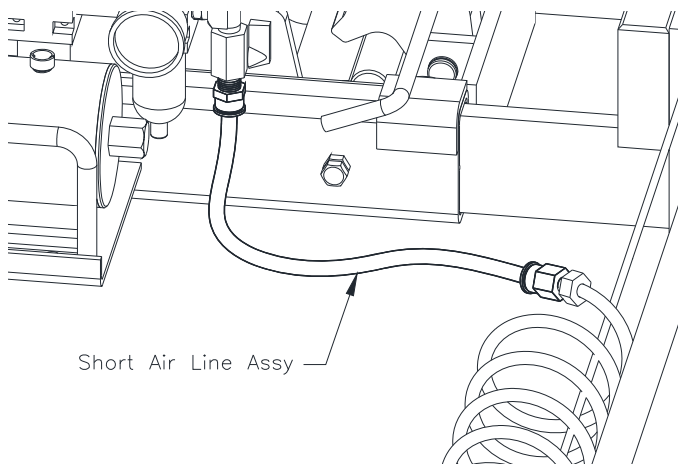


Figure 11

16. Remove Side Member Stop Bolt and Hex Nut. Install Air Line Guide Bracket and replace hardware as shown in **Fig 12**. Using Clamp, 1/4"-20 Hex bolt, and Hex nut, secure tubing to guide bracket. Rotate Clamp as necessary. **Note:**

Ensure there is clearance between air line and jack rollers during operation.

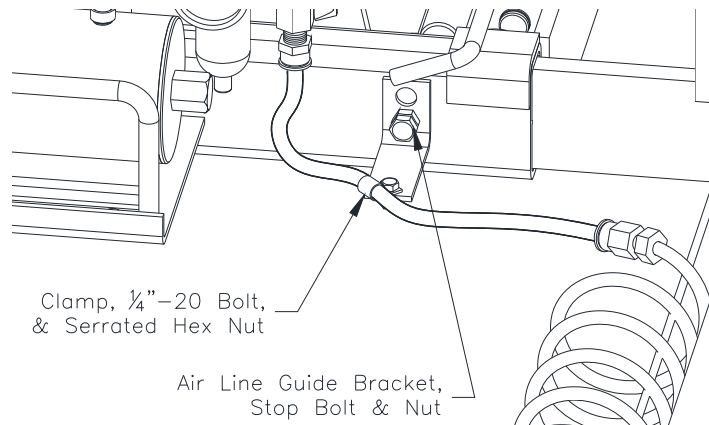


Figure 12

17. Attach Long Air Line Assembly to spiral flex air line farthest from Jack air connection point. Route assembly behind Jack Pump and connect male end to fitting on Jack as shown in **Fig. 13**.

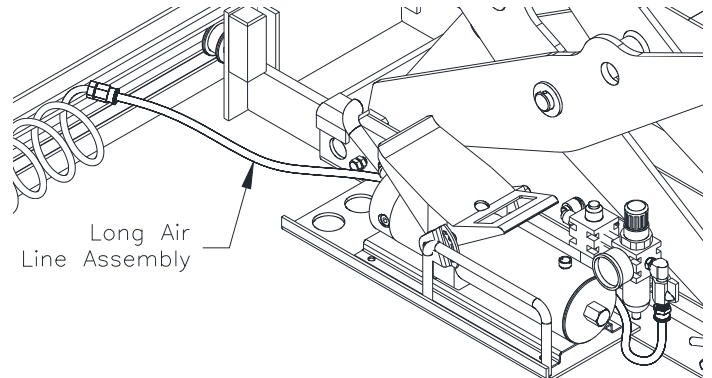


Figure 13

18. Remove Side Member Stop Bolt and Hex Nut. Install Air Line Guide Bracket and replace hardware as shown in **Fig 14**. Using Clamp, 1/4"-20 Hex bolt, and Hex nut, secure tubing to guide bracket. Rotate Clamp as necessary. **Note: Ensure there is clearance between air line and jack rollers during operation.**

Air Line Accessory Kit Installation & Operation Supplement

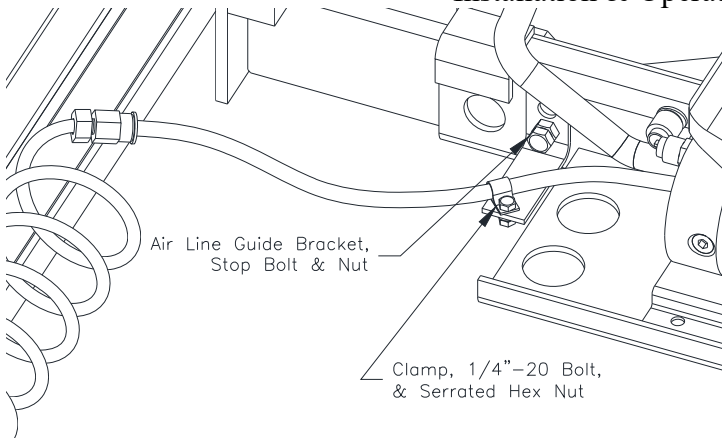


Figure 14

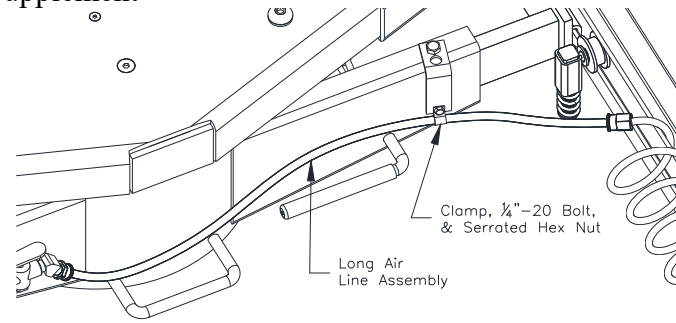


Figure 16

RJAB9 AIR LINE ROUTING:

19. Complete Step 14.
20. Attach Short Air Line Assembly to spiral flex air line closest to the Jack air connection point. Connect male end to fitting on Jack as shown in **Fig 15**.

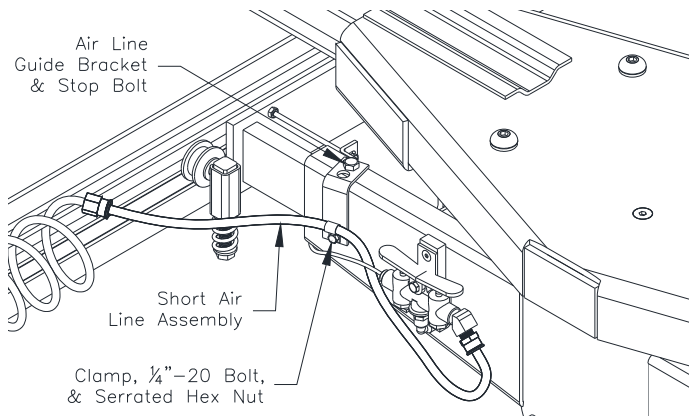
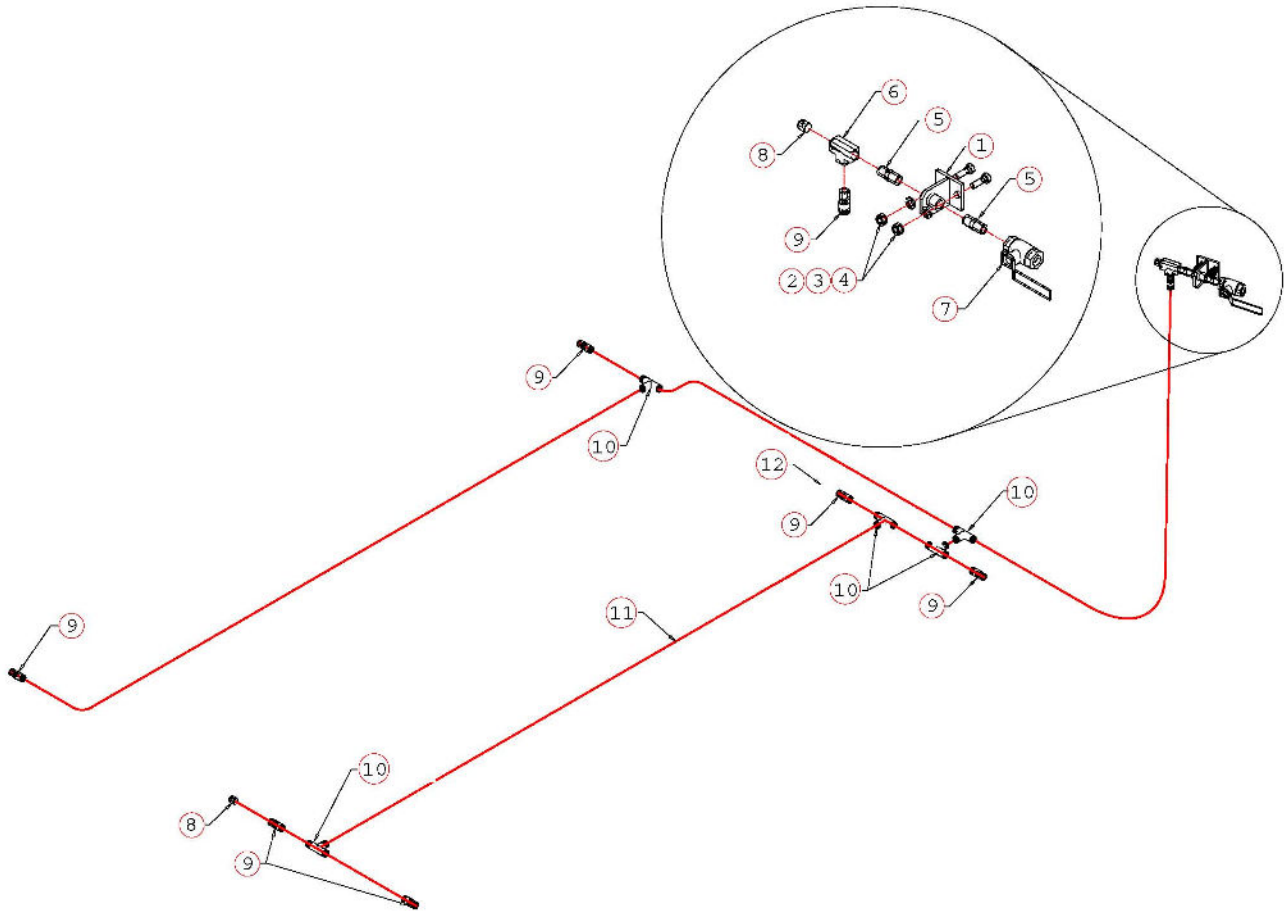


Figure 15

21. Remove Side Member Stop Bolt. Install Air Line Guide Bracket and replace bolt as shown in **Fig 15**. Using Clamp, 1/4"-20 Hex bolt, and Hex nut, secure tubing to guide bracket. Rotate Clamp as necessary. **Note: Ensure there is clearance between air line and jack rollers during operation.**
22. Repeat procedure for the Long Air Line Assembly as shown in **Fig 16**.

Air Line Accessory Kit
Installation & Operation Supplement

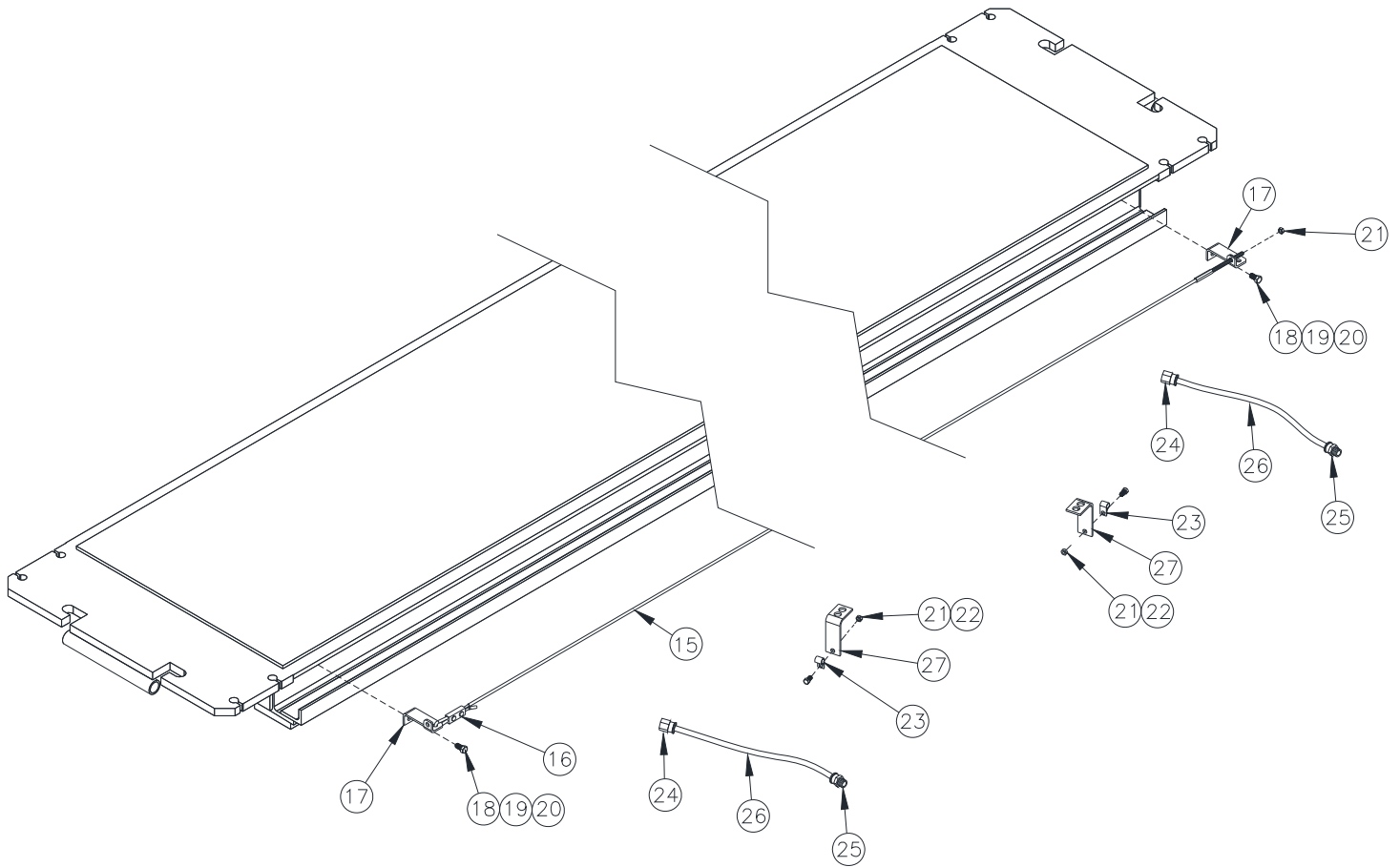
PARTS BREAKDOWN 1 OF 2



ITEM #	PART #	QTY/LIFT	DESCRIPTION
1	10410-10	1	PNEUMATIC BRACKET WELDMENT
2	31189	2	5/16-18 NUT
3	31331	2	5/16 LOCKWASHER
4	11500	2	5/16-18 x 1" HEX HEAD BOLT
5	5485K22	2	1/4 NPT NIPPLE
6	50785K72	1	1/4 NPT FEMALE TEE
7	47865K21	1	1/4 NPT BALL VALVE
8	5406-04P	3	1/4 NPT PLUG
9	SPC-6002	7	1/4 NPT x 3/8" TUBE STRAIGHT FITTING, PUSH TO LOCK
10	SPE-60	6	3/8 TUBE TEE, PUSH TO LOCK
11	PT24006BK	70'	3/8" OD TUBE
12	5245K11	2	1/4 NPT FLEX COIL HOSE

Air Line Accessory Kit
Installation & Operation Supplement

PARTS BREAKDOWN 2 OF 2



ITEM #	PART #	QTY/LIFT	DESCRIPTION
15	40246	1	1/8" CABLE ASSEMBLY
16	40319	1	CABLE CLAMP
17	40315	2	CABLE MOUNTING BRACKET
18	31331	2	5/16 LOCKWASHER
19	11500	2	5/16-18 x 1" HEX HEAD BOLT
20	31189	2	5/16-18 HEX NUT
21	40085	3	1/4"-20 HEX NUT
22	A2125	2	1/4"-20 x 3/4" HEX FLANGE HEAD BOLT
23	31025	2	LINE CLAMP
24	40330	2	1/4" FNPT x 3/8" TUBE STRAIGHT FITTING, PUSH TO LOCK
25	SPC-6002	2	1/4" MNPT x 3/8" TUBE STRAIGHT FITTING, PUSH TO LOCK
26	PT24006BK	5'	3/8" OD TUBE
27	40316	2	AIR LINE GUIDE BRACKET

Air Line Accessory Kit
Installation & Operation Supplement

NOTES

Air Line Accessory Kit
Installation & Operation Supplement

REVISIONS

2024/03/29 – UPDATED COVER SHEET AND CHANGED ADDRESS.